

# St. Anne of the Sunset School

---

## Student Design Workbook





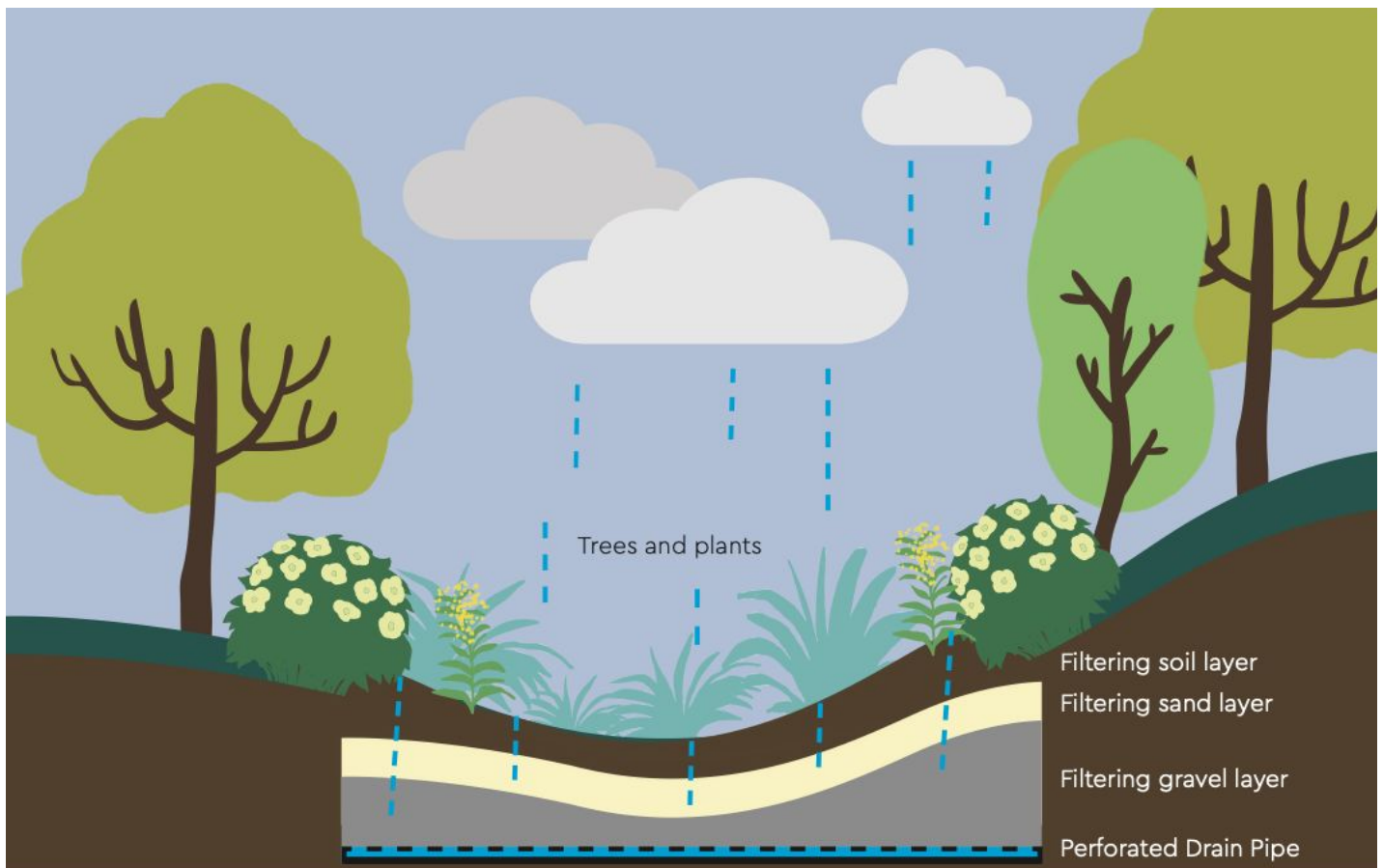
# GREEN STORMWATER INFRASTRUCTURE

## What is Green Stormwater Infrastructure?

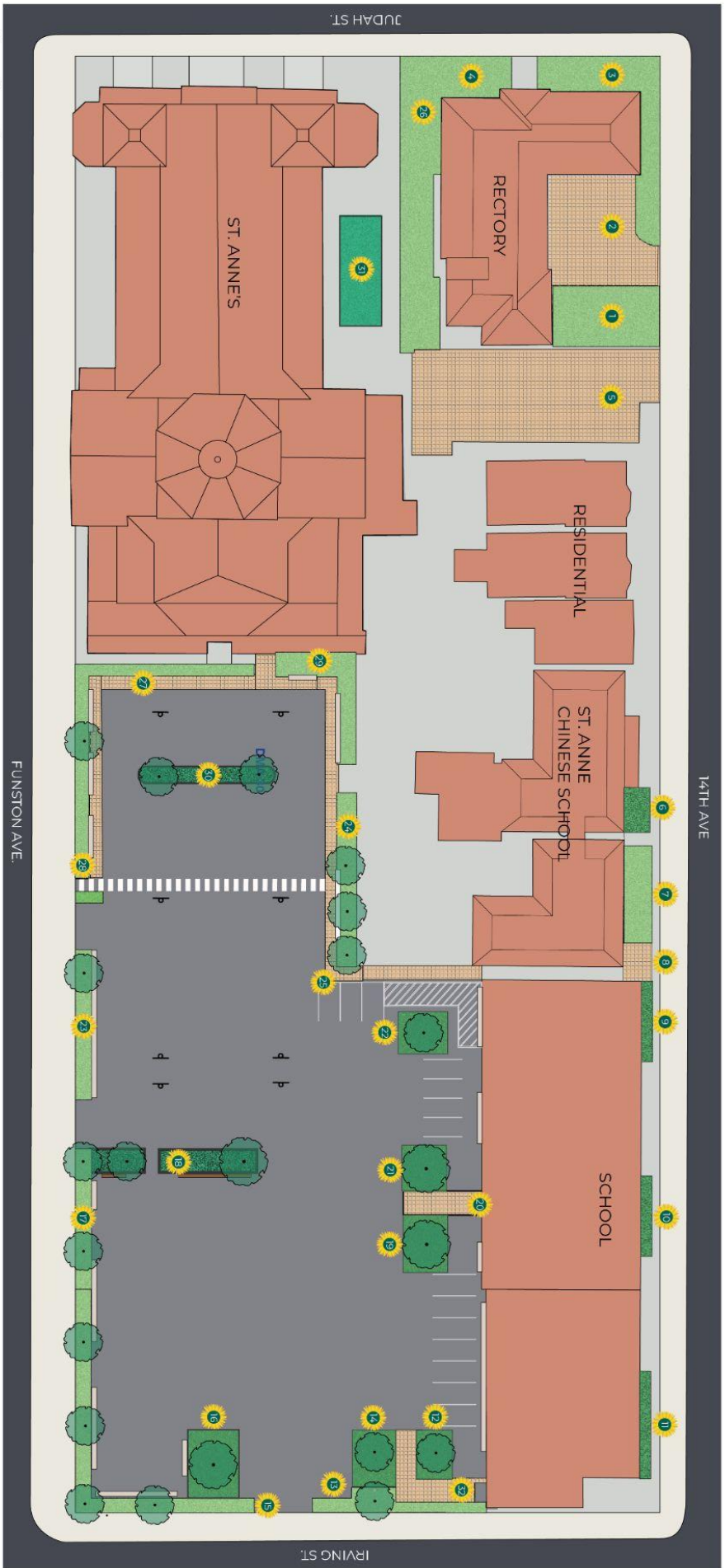
Green stormwater infrastructure is green space that acts like a sponge, soaking up rainwater right where it falls to reduce flooding and water pollution. The plants on the surface also help clean the air, reduce carbon, and provide habitat for butterflies and birds.

## How does green stormwater infrastructure work?

Green Stormwater Infrastructure (like the rain garden shown below) collects, filters, and stores water.



GREEN INFRASTRUCTURE TRANSFORMS COMMUNITIES. WE PARTNER WITH CITIES TO DELIVER MORE, BETTER, FOR ALL.



**LEGEND**

- |  |                                                                          |  |                  |  |             |
|--|--------------------------------------------------------------------------|--|------------------|--|-------------|
|  | NEW GREEN STORMWATER INFRASTRUCTURE (GSI) GSI FEATURE TYPES LISTED BELOW |  | NEW TREES        |  | SIDEWALK    |
|  | NEW RAIN GARDEN WITH RAISED CURB                                         |  | EXISTING BENCHES |  | PARKING LOT |
|  | NEW RAIN GARDEN WITHOUT CURB                                             |  | NEW BENCHES      |  | BUILDING    |
|  | NEW LANDSCAPE                                                            |  | STEPPING STONES  |  | STREET      |
|  | PERMEABLE PAVEMENT                                                       |  | BASKETBALL HOOPS |  |             |



# Which Garden Style is your Favorite?

---

Read about the garden styles on this page and the next page. After reading the facts about each garden circle which garden type you like best on the next page.

---

## Mediterranean Garden

---



1. Swan Hill Olive (low branching)



2. Blue Gem Coast Rosemary



3. Sunset Rockrose



4. Rosemary



5. Pacific Coast Hybrid Iris



6. Hidcote Superior Lavender



7. Jerusalem Sage

1. Swan Hill Olive Trees don't produce fruit and have 1% of the pollen that other olive trees do.
2. Blue Gem Coast Rosemary is an evergreen shrub meaning it has leaves all year round.
3. Sunset Rockrose produces a sweet smelling resin that is used in perfumes.
4. Rosemary is highly drought toleran, fragrant, and attracts many species of pollinators.
5. Pacific Coast Hybrid Irises come in many different colors and are flood and drought tolerant.
6. Hidcote Superior Lavender is drought resistant and has a smell known for its calming effects.
7. Jerusalem Sage is native to the Middle East, has fuzzy leaves, and is in the mint family.

---

## Sensory Garden

---



1. Southern Magnolia



2. Powis Castle Wormwood



3. Mexican Bush Sage



4. Moonshine Yarrow



5. Salmon Autumn Sage



6. Trailing Lantana



7. Foothill Sedge

1. Southern Magnolia trees have a wonderful sweet aroma that smells a bit like citrus.
2. Powis Castle Wormwood has shimmering silver leaves and a sweet aroma.
3. Mexican Bush Sage's purple flowers produce nectar that attracts hummingbirds.
4. Moonshine Yarrow has medicinal qualities, improves soil health, and repels certain insects.
5. Salmon Autumn Sage has a minty aroma and attracts hummingbirds.
6. Trailing Lantana produces purple flowers nearly year-round and provides food for butterflies.
7. Foothill Sedge seeds provide food for birds.

---

Now that you have read the fun facts about each garden circle the one you would most like to see at St. Anne School:

Mediterranean Garden

Sensory Garden

---



# POLLINATORS + BIRDS

Which three of the pollinators and birds would you most like to see in the gardens around St. Anne School? We will do our best to select plants that provide food and habitat for these pollinators and birds.



Anna's Hummingbird



Allen's Hummingbird



Monarch Butterfly



Anise Swallowtail Butterfly



Western Tiger Swallowtail Butterfly



Cedar Waxwing

GREEN INFRASTRUCTURE TRANSFORMS COMMUNITIES. WE PARTNER WITH CITIES TO DELIVER MORE, BETTER, FOR ALL.



# COMMUNITY BENEFITS

Green stormwater infrastructure is a wonderful solution to manage stormwater, but also helps communities flourish.

**Circle the benefits that you're most interested in.**



## BEAUTY

Beautiful, well-maintained gardens are placed where people can enjoy the view.



## HEALTHY BODIES

Green infrastructure draws people outside to walk, bike, and play, and get our bodies moving.



## HEALTHY MINDS

Research shows that green infrastructure can help reduce stress and improve mental well-being.



## PERSONAL SAFETY

Well maintained green spaces can deter illegal activities, making communities safer.



## TRAFFIC SAFETY

Attractive landscaping often slows down drivers which makes the space safer for walkers and bikers.



## STUDENT ACHIEVEMENT

Having views of nature improves student focus and learning.



## SOCIAL SPACE

Beautiful outdoor gathering places can foster a sense of community and belonging.



## AIR QUALITY

Plants - especially trees - can filter the air, making it cleaner to breathe.



## HABITAT

Native plants attract pollinators like butterflies and offer shelter and food for beneficial insects and birds.

GREEN INFRASTRUCTURE TRANSFORMS COMMUNITIES. WE PARTNER WITH CITIES TO DELIVER MORE, BETTER, FOR ALL.



# Information to Take Home

An attractive, eco-friendly landscaping solution, green stormwater infrastructure (GSI) offers many benefits for San Francisco properties. Examples include: rain gardens, tree plantings, porous pavement, and green roofs. Today, your student attended an educational workshop to learn about GSI and help design new rain gardens for St. Anne of the Sunset School. The project is funded through the San Francisco Public Utilities Program (SFPUC) Green Infrastructure Grant Program, and will be constructed in 2022.

**Project highlights are included below:**

## 32 New GSI Features

These features will capture stormwater runoff from 2 acres.

## 1 Million Gallons Managed

Each year, the GSI will manage enough runoff to fill 1.5+ Olympic-sized pools.

## Year-Round Beauty

The gardens will feature native plants and flowers selected by your student!



## SFPUC Green Infrastructure Grant Program

SFPUC is investing in community-scale green infrastructure through the Green Infrastructure Grant Program. Every project helps San Francisco meet our commitment to reduce combined sewer overflows.

**Greenprint Partners is a green infrastructure delivery partner that helps cities build high-impact, community-driven green infrastructure at scale. We are a woman-owned B-Corp. Get in touch at [GreenprintPartners.com](https://www.GreenprintPartners.com).**

GREEN INFRASTRUCTURE TRANSFORMS COMMUNITIES. WE PARTNER WITH CITIES TO DELIVER MORE, BETTER, FOR ALL.